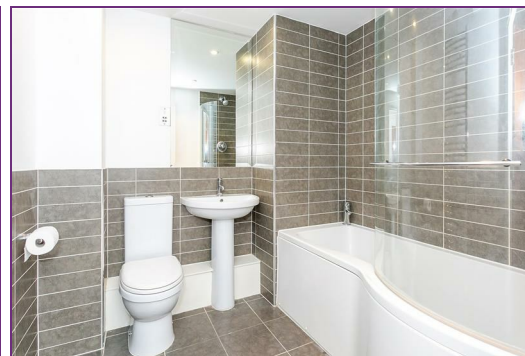




Fusion Court, Ware, SG12 9EJ
£950 Per Calendar Month

A one bedroom first floor apartment situated in this popular gated riverside development a short walk from Ware town centre, Train Station and private gate onto River Lea tow path. The apartment benefits from open plan living with lounge opening into fitted kitchen with built in appliances and French doors with Juliet balcony looking onto communal gardens. Bedroom with fitted wardrobes and luxury bathroom. Further benefits include gas central heating, allocated parking, lift and video entry phone system. Available now, subject to referencing. EPC B.

RENT £950 per calendar month. DEPOSIT £1095



Energy Efficiency Rating		
	Current	Potential
Very energy efficient - lower running costs		
(92 plus) A		
(81-91) B		
(69-80) C		
(55-68) D		
(39-54) E		
(21-38) F		
(1-20) G		
Not energy efficient - higher running costs		
England & Wales		EU Directive 2002/91/EC

Environmental Impact (CO ₂) Rating		
	Current	Potential
Very environmentally friendly - lower CO2 emissions		
(92 plus) A		
(81-91) B		
(69-80) C		
(55-68) D		
(39-54) E		
(21-38) F		
(1-20) G		
Not environmentally friendly - higher CO2 emissions		
England & Wales		EU Directive 2002/91/EC

